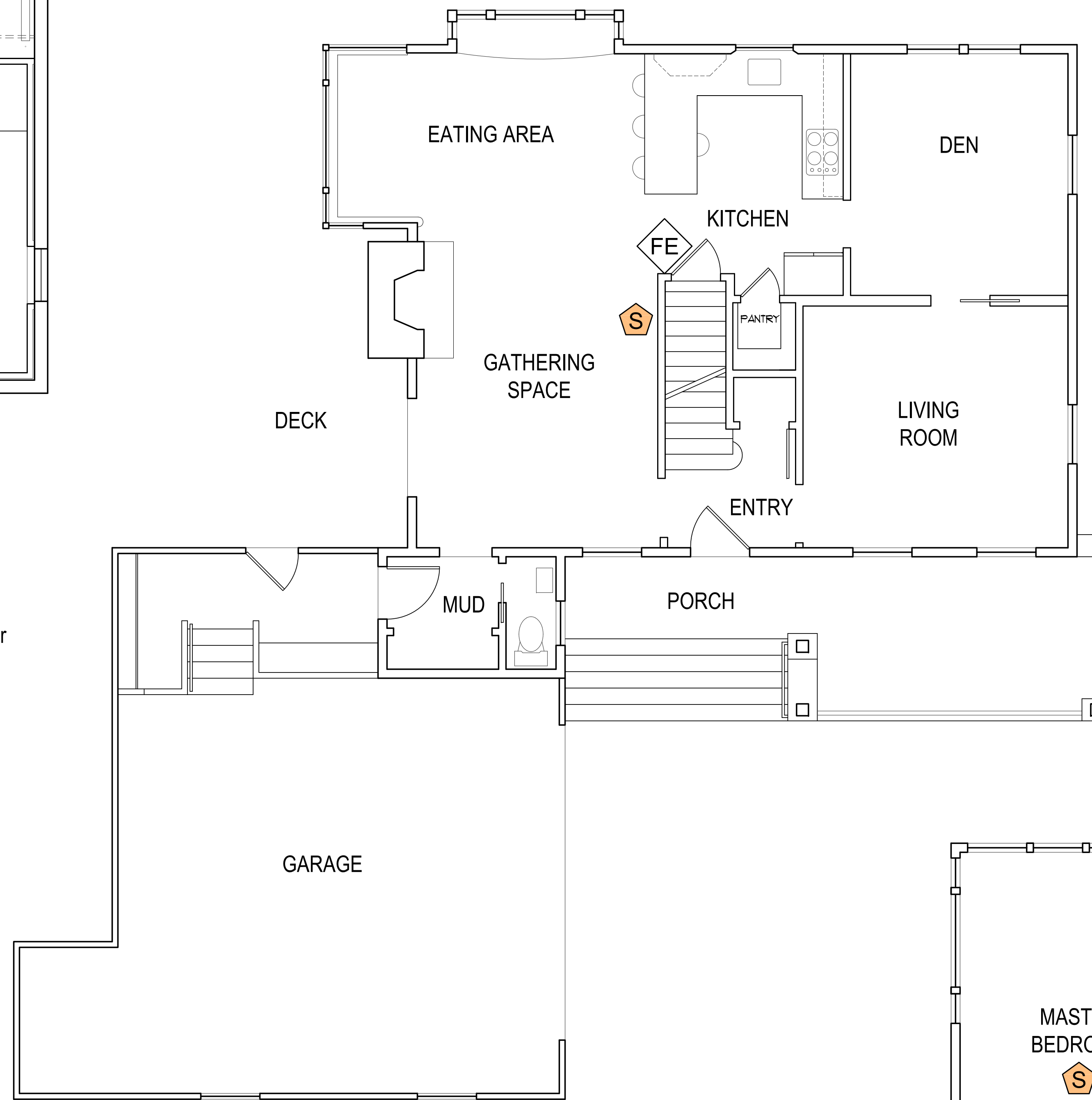


Basement Plan

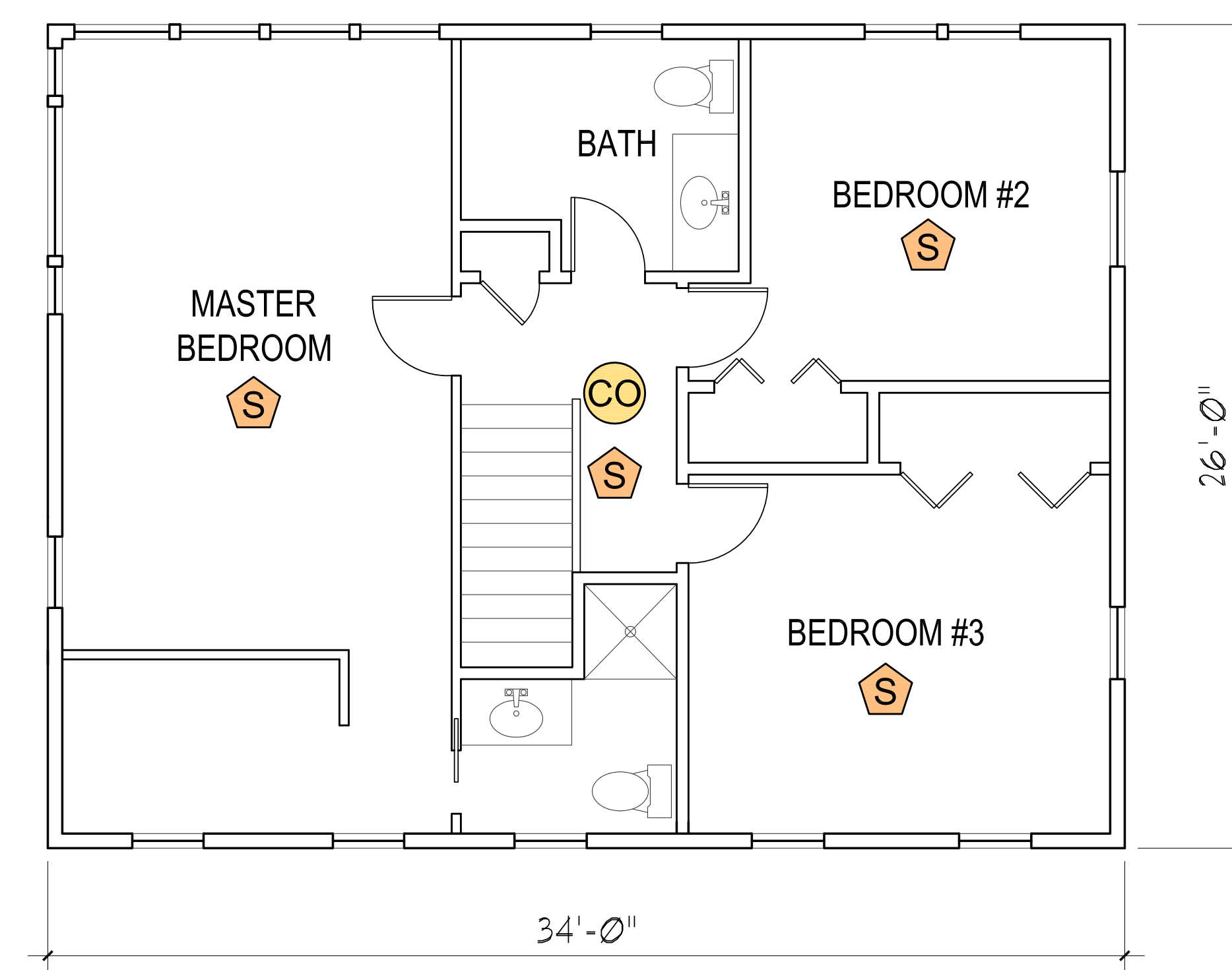
1/4" = 1'-0"

- Fire Extinguisher
- CO detector
- smoke detector
- emergency lighting



1st Floor Plan

1/4" = 1'-0"



2nd Floor Plan

1/4" = 1'-0"

The building code requires safety features in relation to the occupants probable familiarity with a space.

Many of us could get out of our own homes with our eyes closed if we had to, because we are familiar with the locations of stairs and doors. In the event of a fire in the middle of the night, this familiarity could save our life

If we are talking about an emergency evacuation in a space we are unfamiliar with, such as a hospital, mall, or large office building, we need help from directional exit signs, emergency lighting, and corridors and stairs designed to handle the number of potential occupants.

In the event of an emergency in a hotel, motel, bed and breakfast, there is a good probability that the occupants will be unfamiliar with their environment, especially if they are asleep and have to wake up and leave the premises in an emergency. That is one reason the code requirements for these occupancies are more stringent than for single family dwellings.

Section 314, Smoke Alarms IRC 2009, Commentary:

This detection and notification system provides early warning to occupants of the building in the event of a fire, thereby providing a greater opportunity for everyone in the building to evacuate or relocate to a safe area. Of all of the provisions for safety features that have been placed within the code over the past few decades, the provisions for these detection and alarm devices have probably offered the greatest benefit in increasing safety and reducing the loss of life when compared to their minor expense.